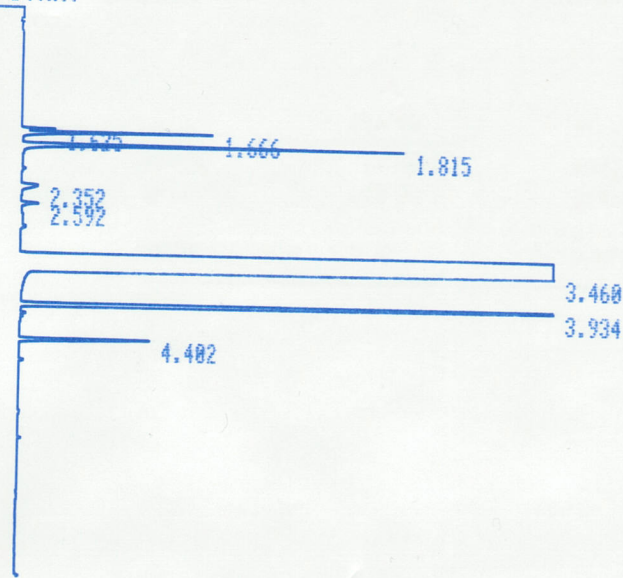


65°C

* RUN # 10 JAN 1, 1981 03:10:57



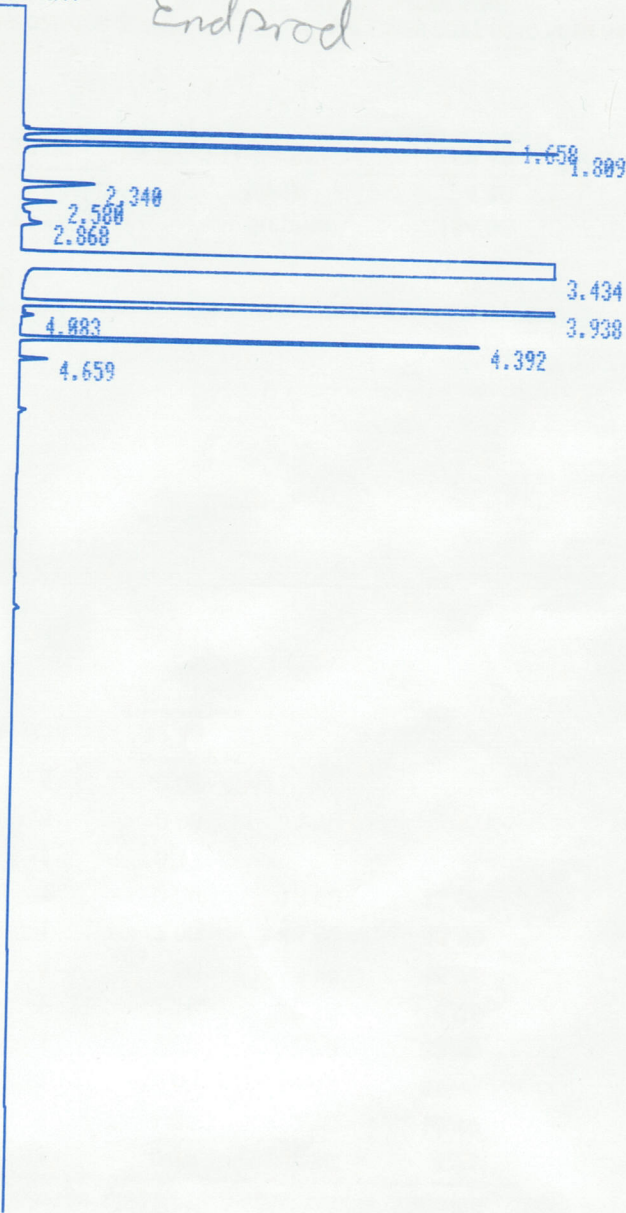
STOP

RUN# 10 JAN 1, 1981 03:10:57

RT	AREA	TYPE	WIDTH	AREA%
1.666	105474	VB	.019	.11927
1.815	266485	PB	.024	.30134
3.460	87115712	PB	.107	98.50963
3.934	946044	PB	.025	1.06978

TOTAL AREA=8.8434E+07
MUL FACTOR=1.0000E+00

* RUN # 3 JAN 1, 1981 00:54:35



Endprod

STOP

RUN# 3 JAN 1, 1981 00:54:35

RT	AREA	TYPE	WIDTH	AREA%
1.658	267359	VB	.019	.34256
1.809	410334	PB	.025	.52574
2.340	110755	PB	.054	.14191
3.434	74113088	PB	.098	94.95779
3.938	2792344	PB	.032	3.57771
4.392	354586	PB	.027	.45432

TOTAL AREA=7.8048E+07
MUL FACTOR=1.0000E+00

BEICO