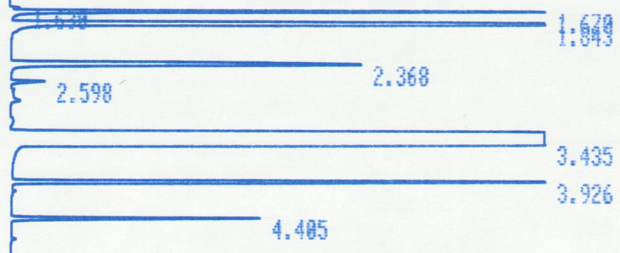


* RUN # 7 JAN 1, 1901 02:19:46
START

63



STOP

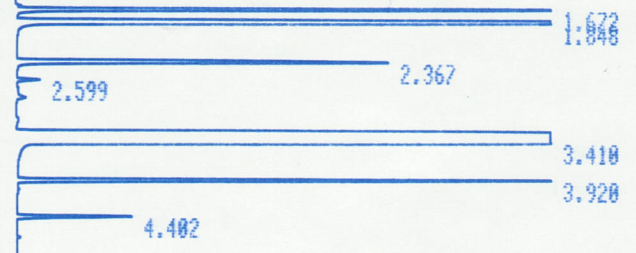
RUN# 7 JAN 1, 1901 02:19:46

RT	AREA	TYPE	WIDTH	AREA%
1.670	397953	PB	.019	.61629
1.843	1606143	BB	.029	2.48736
2.368	452070	PB	.045	.70010
3.435	61360448	PB	.092	95.02624
3.926	562451	PB	.023	.87104
4.405	193070	PB	.027	.29900

TOTAL AREA=6.4572E+07
MUL FACTOR=1.0000E+00

62c

* RUN # 6 JAN 1, 1901 02:00:24
START



STOP

RUN# 6 JAN 1, 1901 02:00:24

RT	AREA	TYPE	WIDTH	AREA%
1.672	360243	PB	.017	.78727
1.848	1813323	PB	.029	3.96279
2.367	360187	PB	.034	.78714
3.410	42791264	PB	.078	93.51501
3.920	433696	PB	.023	.94779

TOTAL AREA=4.5759E+07
MUL FACTOR=1.0000E+00

