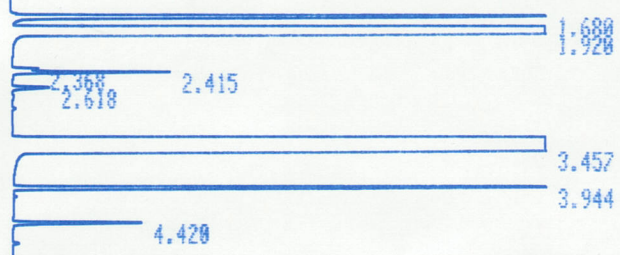


\* RUN # 5 JAN 1, 1901 01:41:23  
START

56°C



STOP

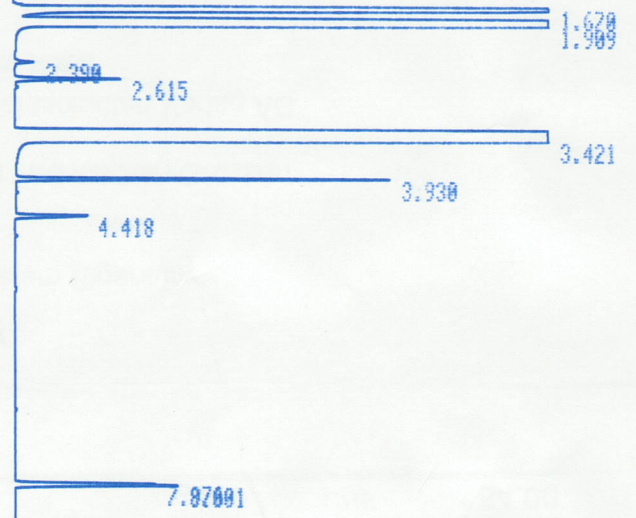
RUN# 5 JAN 1, 1901 01:41:23

RT	AREA	TYPE	WIDTH	AREA%
1.680	1304147	PB	.019	1.64864
1.920	8995770	PB	.065	11.37205
2.415	102483	VB	.023	.12955
3.457	68035008	PB	.097	86.00678
3.944	565814	PB	.024	.71528
4.420	101028	PB	.027	.12772

TOTAL AREA=7.9104E+07  
MUL FACTOR=1.0000E+00

55°C

\* RUN # 4 JAN 1, 1901 01:20:52  
START



STOP

RUN# 4 JAN 1, 1901 01:20:52

RT	AREA	TYPE	WIDTH	AREA%
1.670	8454502	PB	.022	13.76842
1.909	7542672	BB	.062	12.28348
3.421	44925856	PB	.084	73.16320
3.930	250648	PB	.023	.40819
7.976	105309	PV	.026	.17150
8.001	126011	VB	.027	.20521

TOTAL AREA=6.1405E+07  
MUL FACTOR=1.0000E+00

ВНИМАНИЕ  
2.1.24 ВНИМАНИЕ  
ВНИМАНИЕ 1.1  
ВНИМАНИЕ 1.1

ВНИМАНИЕ 1.1  
E-WP  
1.1  
CH-1000  
КОНТРОЛЬ 1.1  
ИСПОЛНИТЕЛЬ 1.1

