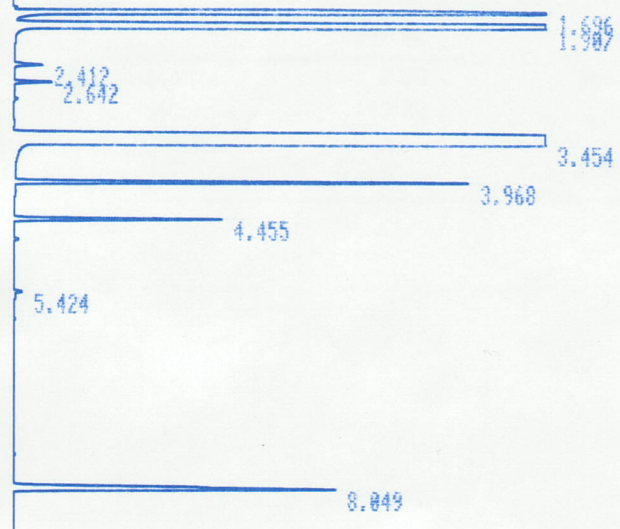


59-63 C DMA

* RUN # 2 JAN 1, 1981 00:09:17
START

DMA 59°C



STOP

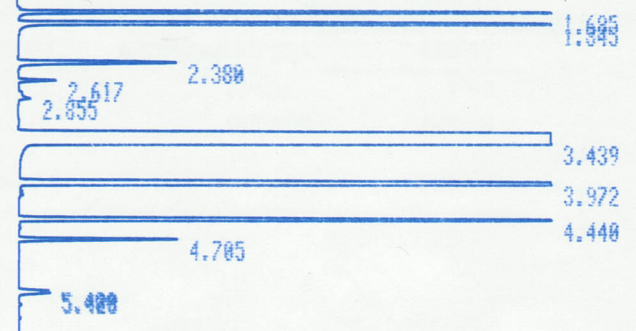
RUN# 2 JAN 1, 1981 00:09:17

AREA%

RT	AREA	TYPE	WIDTH	AREA%
1.696	2744058	PB	.017	5.73348
1.987	4200499	BB	.043	8.77660
3.454	40051264	PB	.079	83.68384
3.968	383988	PB	.023	.63516
4.455	163490	PB	.027	.34160
8.049	396942	PB	.043	.82938

TOTAL AREA=4.7860E+07
MUL FACTOR=1.0000E+00

* RUN # 3 JAN 1, 1981 00:30:13
START



STOP

RUN# 3 JAN 1, 1981 00:30:13

AREA%

RT	AREA	TYPE	WIDTH	AREA%
1.685	399062	PB	.016	.77337
1.845	762780	PB	.021	1.36196
2.380	163017	PB	.036	.31592
3.439	46843136	PB	.084	90.77997
3.972	2574870	PB	.032	4.98999
4.440	799101	PB	.028	1.54862
4.705	118791	PB	.026	.23021

TOTAL AREA=5.1601E+07
MUL FACTOR=1.0000E+00

1. 100%
 2. 100%
 3. 100%
 4. 100%
 5. 100%
 6. 100%
 7. 100%
 8. 100%
 9. 100%
 10. 100%
 11. 100%
 12. 100%
 13. 100%
 14. 100%
 15. 100%
 16. 100%
 17. 100%
 18. 100%
 19. 100%
 20. 100%
 21. 100%
 22. 100%
 23. 100%
 24. 100%
 25. 100%
 26. 100%
 27. 100%
 28. 100%
 29. 100%
 30. 100%
 31. 100%
 32. 100%
 33. 100%
 34. 100%
 35. 100%
 36. 100%
 37. 100%
 38. 100%
 39. 100%
 40. 100%
 41. 100%
 42. 100%
 43. 100%
 44. 100%
 45. 100%
 46. 100%
 47. 100%
 48. 100%
 49. 100%
 50. 100%

